



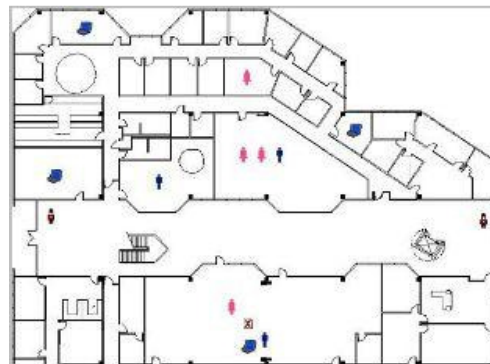
## NEAT – NVision Graphical Display

NControl Security Integrations introduces NEAT. NEAT is a scalable system that offers an easy to use and install system which provides the location of all asset and personnel in real-time and reports that show movement history.

The **NEAT** system offers options to enhance the functionality of the system. These options are designated into two different groups. The first group is subsystems, which are applications that are software based options. The second are devices, which are hardware devices with software that are added to the **NEAT** system.

### HIGHLIGHTS

- Web-based system allows for multiple users simultaneously
- Load up to eight different maps per user and move between maps quickly and efficiently
- Search for asset by icon or name
- Determine if assets are in the correct location
- Users only see maps they have defined
- Save time and Money



Use **NVision** to:

- Instantly locate assets on a map of your facility
- See assets move in Real-Time
- View asset information by clicking on asset
- View all assets within a defined area
- Upload you own photos for asset authentication

**NVision** provides a user friendly visual summary of the current network conditions. Assets are displayed in relation to areas defined on a loaded, PDF formatted, map. Assets can be displayed as icons, dots, or as a numerical value.

The web-based format allows multiple users simultaneously and permits each user to load up to 8 different maps. Each user has protected access and will only see maps they have defined.

On each map, users can define areas of reader coverage (zones), which can be displayed as circles or squares. Included in these areas will be the assets that are currently 'seen' by the readers assigned to this area.

At system installation, the integrator can select how asset information will be displayed in **NVision** based on the system design. Options include Active, which displays all assets currently 'seen' by readers or Last Seen, which displays the last known location of the asset.

**NVision** will display all defined areas and all assets that are currently in those areas. Users can display detailed information on assets by highlighting individual assets icons, by locating the asset in the asset dropdown list, or by using the search feature.

**NVision** offers a number of options to enhance the system. These options include:

- Displaying assets as individual icons or display a total number of assets in the area.
- The ability to assign unique icons to each asset.
- The option of displaying the last 25 asset movement events on the **NVision** main page.
- The option of adding visual images to asset details.

For additional information on **NVision** please contact **NControl Security Integrations, LLC** at either [sales@ncontrolsecurity.com](mailto:sales@ncontrolsecurity.com) or via telephone at (219) 285-0141.